

## Table of contents

<b>1</b>	<b>Introduction to Edu.Dex .....</b>	<b>1</b>
<b>2</b>	<b>System requirements .....</b>	<b>1</b>
2.1	Operational System Hardware Requirements.....	1
2.2	Operational Support Software Requirements.....	1
<b>3</b>	<b>Downloading Edu.Dex .....</b>	<b>2</b>
<b>4</b>	<b>Installing Edu.Dex.....</b>	<b>3</b>

### 1 Introduction to Edu.Dex

The Edu.Dex data validation utility is a custom designed application that ensures that data transmitted within the Education and Training sector of Namibia conforms to the education and training data exchange (Edu.Dex standard) standard.

The primary objective for the development of the Edu.Dex standard is to ensure that any learner registration related data that is transmitted from one information system to another system in batch format complies to the Namibia Qualifications Authority's (NQA) National Qualifications Framework Information Management System (NQFIMS) Load Specifications.

The NQFIMS Load Specification has been developed for the transmission of data from a Training Provider to the NQFIMS system. The NQFIMS Load Specification therefore does not specifically accommodate the transmission of learner registration data from and to other education and training sector stakeholders.

Therefore the secondary objective of the development of the Edu.Dex standard is to provide the Education and Training sector of Namibia with a comprehensive standard, which complies with the NQFIMS Load Specification standard, for the transmission of learner registration data between all Education and Training sector stakeholders.

## 2 System requirements

### 2.1 Operational System Hardware Requirements

The Edu.Dex software application has been developed to function on a PC with the following minimum system specifications:

- Pentium III
- 128 MB RAM
- 1GB of free hard disk space
- Connection to a suitable laser or inkjet printer
- Video resolution of 800 x 600

### 2.2 Operational Support Software Requirements

The Edu.Dex software application will operate within the Windows operating systems

The EduDex software application does not require the installation of any other third party software applications.

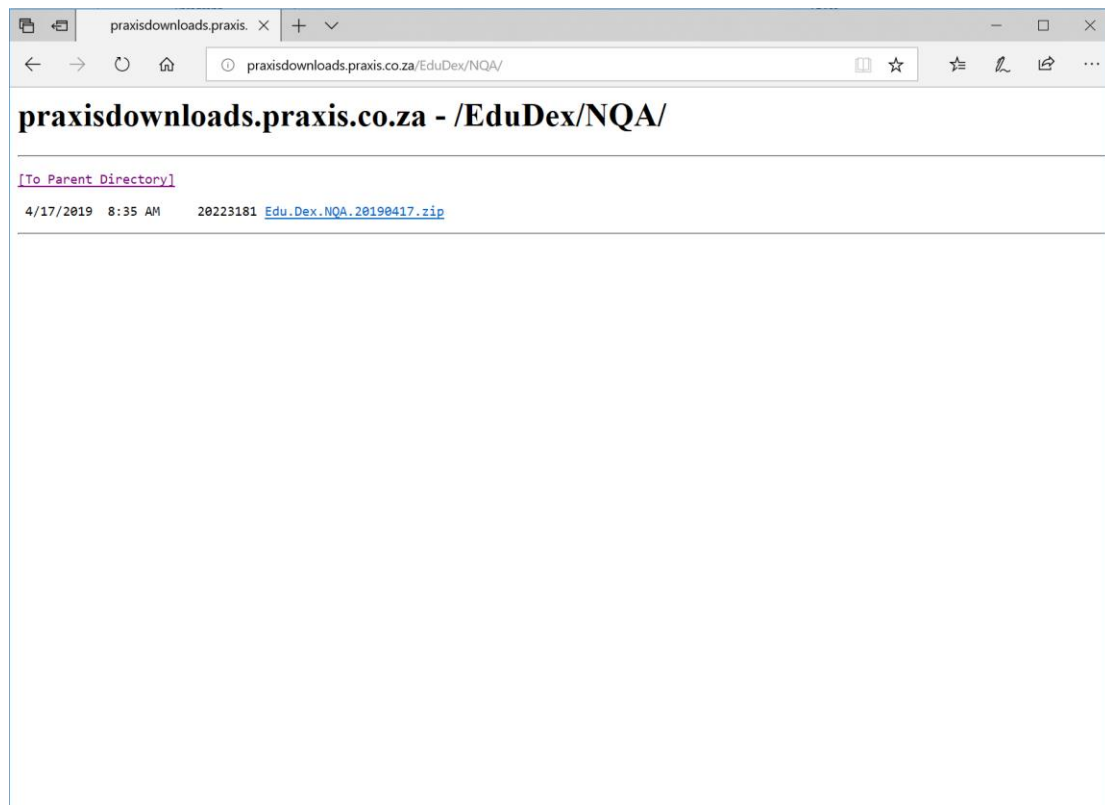
### 3 Downloading Edu.Dex

The latest version of the Edu.Dex data validation utility is always available for downloading from the following site:

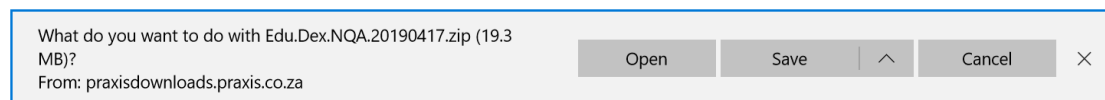
<http://praxisdownloads.praxis.co.za/EduDex/NQA/>

To download your copy of the Edu.Dex data validation utility complete the following steps:

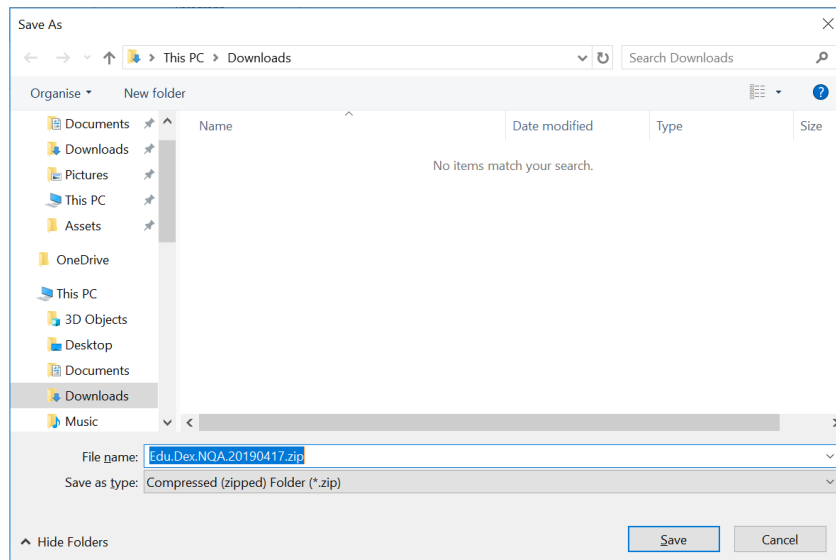
- Go to <http://praxisdownloads.praxis.co.za/EduDex/NQA/> by clicking on this link or by typing the address in on your web browser. You should see the following type of screen:



- Click on the file name Edu.Dex.NQA.20190417.zip (please note that the yyyyymmdd component of the file name will change as and when we release new versions of Edu.Dex) , you should see the following type of notification:



- Click on the arrow next to Save and select Save as, you should see the following type of screen. Browse to where you want to save the installation to and click on Save.



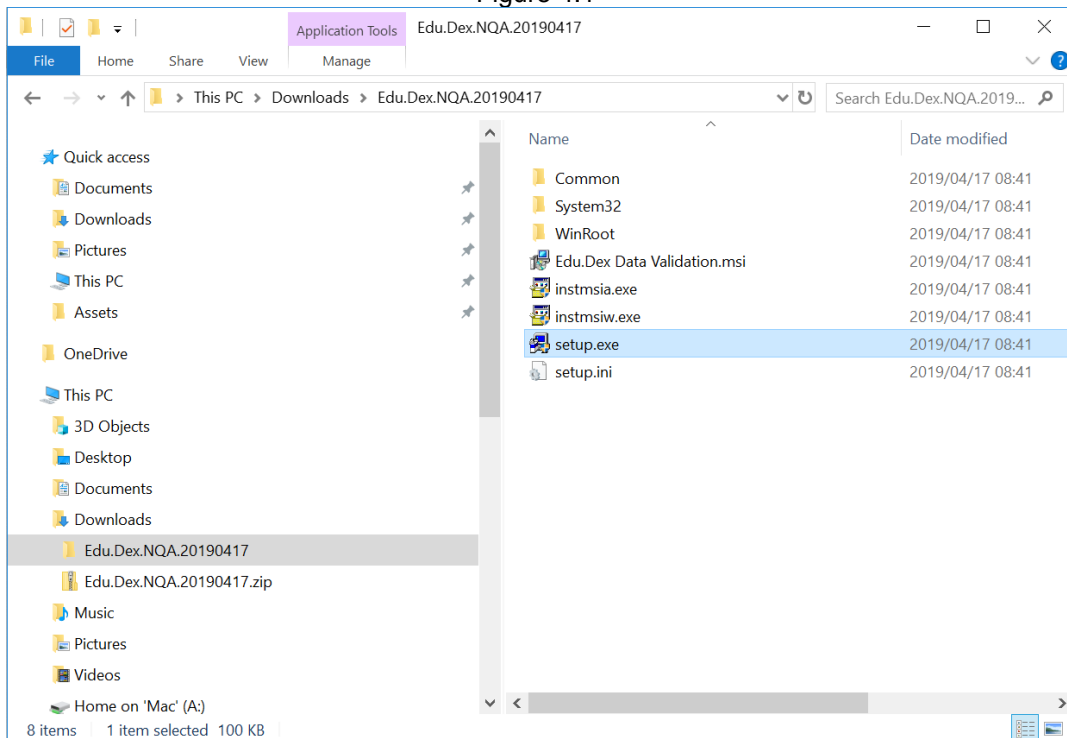
**Please note that the Edu.Dex data validation utility has been compressed. Use either WinZip or the Windows Compressed (zipped) Folders utility to extract the contents of the zipped file before you proceed with the next steps (contact us if you are not sure how to uncompress a file).**

## 4 Installing Edu.Dex

The installation of the Edu.Dex data validation utility is performed from the location to which you uncompressed the Edu.Dex installation set.

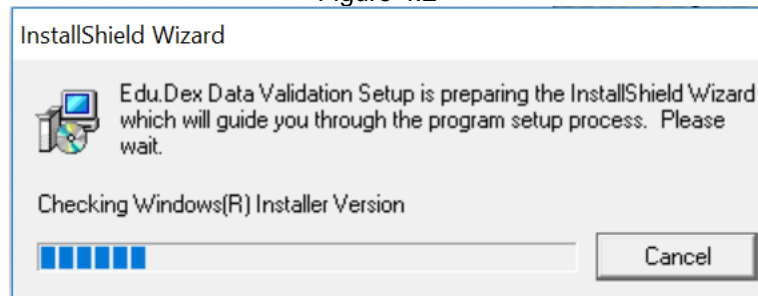
- **Close all other software** programs before starting the installation.
- Browse to the location to which you uncompressed the Edu.Dex installation set (see Figure 4.1) and double click on the file **setup.exe**.

Figure 4.1



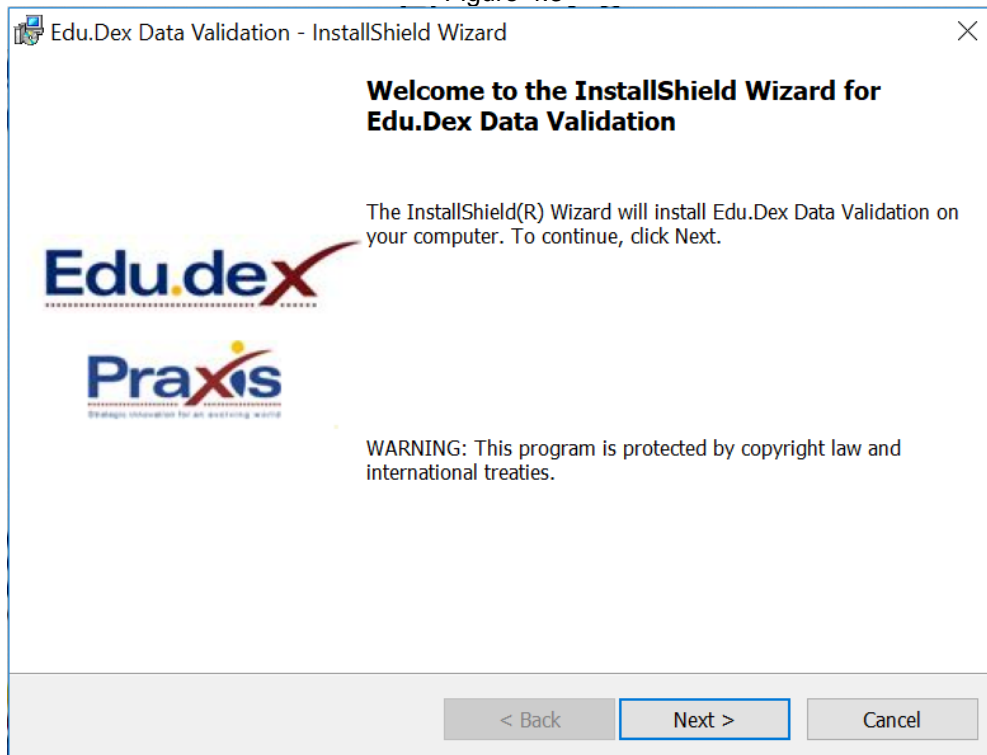
This will activate InstallShield as shown in Figure 4.2. The wizard will perform certain system checks, including a check that determines the version of your Windows Installer, and a check to determine whether your system has the required data access components installed. If your Windows Installer is a later version than the one supplied, the wizard will install the newer version. Additionally, the wizard will install the required data access components should your system not have them available.

Figure 4.2



The Edu.Dex data validation utility installation has started once you see the screen shown in Figure 4.3. Click on the next button to continue with the installation.

Figure 4.3



Enter your information into the User Name and Organisation blocks. Click on the next button to continue with the installation (see Figure 4.4).

Figure 4.4

**Customer Information**  
Please enter your information.

User Name:  
Praxis

Organization:  
Praxis Computing

Install this application for:

Anyone who uses this computer (all users)  
 Only for me ()

InstallShield

< Back   Next >   Cancel

The default installation folder for the Edu.Dex data validation utility is C:\Edu.Dex. To change the destination folder, click the Change button and follow the instructions. Click on the next button to continue with the installation (see Figure 4.5).

Figure 4.5

**Destination Folder**  
Click Next to install to this folder, or click Change to install to a different folder.

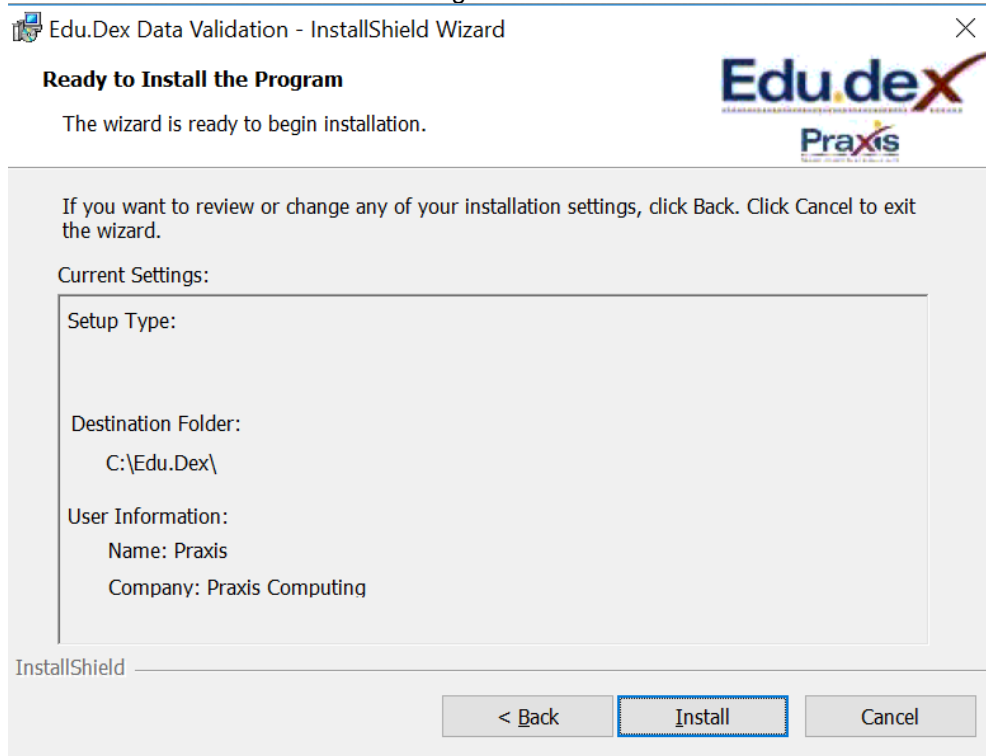
Install Edu.Dex Data Validation to:  
C:\Edu.Dex\   Change...

InstallShield

< Back   Next >   Cancel

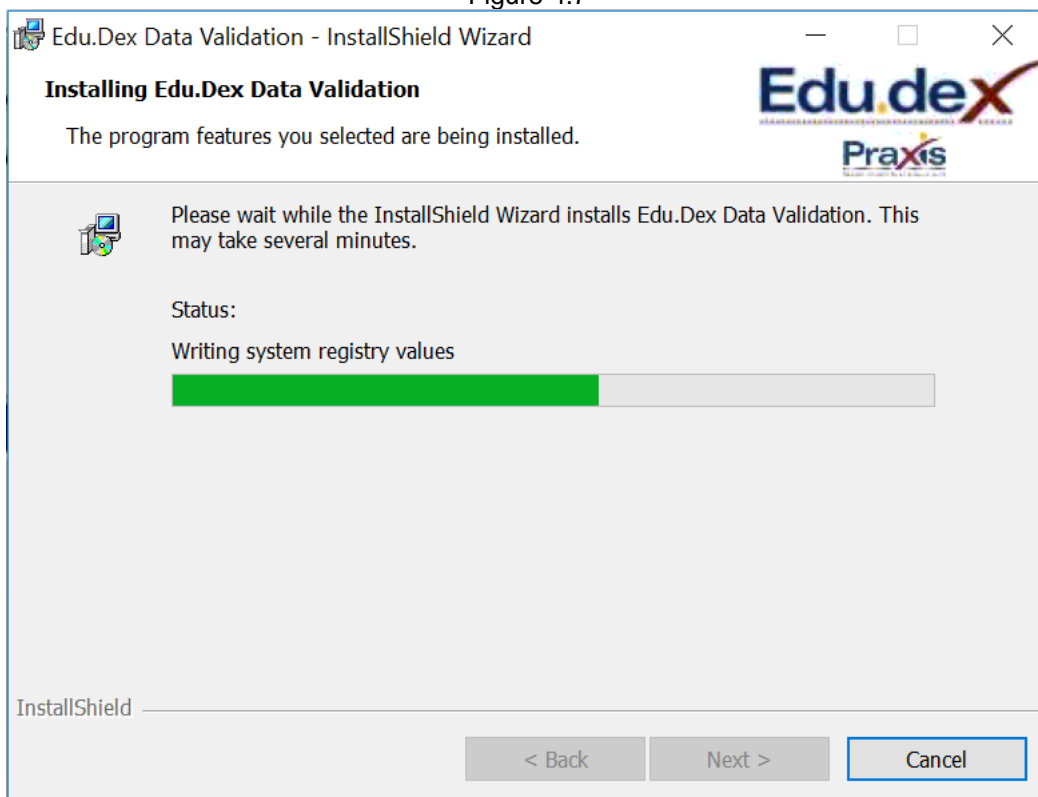
The wizard will display the installation settings you have selected. Click on the Install button to continue with the installation (see Figure 4.6)

Figure 4.6



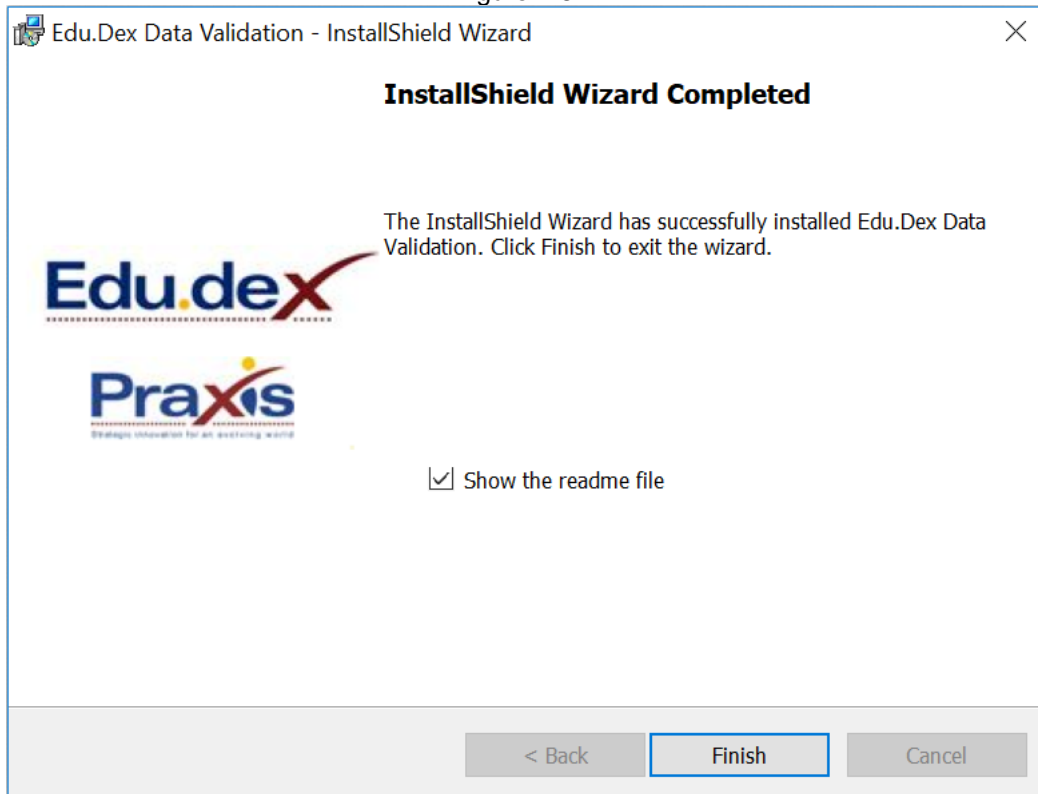
The Edu.Dex utility application will now be installed (see Figure 4.7).

Figure 4.7



Once the installation process has been completed you may select to view the read me file by selecting the "Show the read me file" option. Click on finish to complete the installation (see Figure 4.8).

Figure 4.8



If prompted to do so, reboot your computer after the installation has completed. The Edu.Dex data validation utility has now been installed successfully.