

Table of contents

1	Introduction	1
2	What are the Edu.Dex SAS SETA lookup codes	1
3	Where to find the Edu.Dex SAS SETA lookup codes	1
4	How to update the Edu.Dex SAS SETA lookup codes.....	1

1 Introduction

This document provides a step by step approach to the updating of the Edu.Dex data validation utility lookup codes as supplied by SAS SETA.

2 What are the Edu.Dex SAS SETA lookup codes

The Edu.Dex data validation utility validates your data against lookup codes (for example gender codes, equity codes etc), qualification codes and course codes as stored in the SAS SETA database. Lookup codes, assessor identifiers, moderator identifiers, qualification codes and unit standard identifiers are dynamic data features of the SAS SETA database, the Edu.Dex data validation utility must therefore be updated on a regular basis to ensure that your data is validated against the most current data values.

Please note that it is the responsibility of the Training Provider to update the Edu.Dex lookup codes, assessor identifiers, moderator identifiers, qualification codes and course codes prior to testing a data submission that will be sent to SAS SETA.

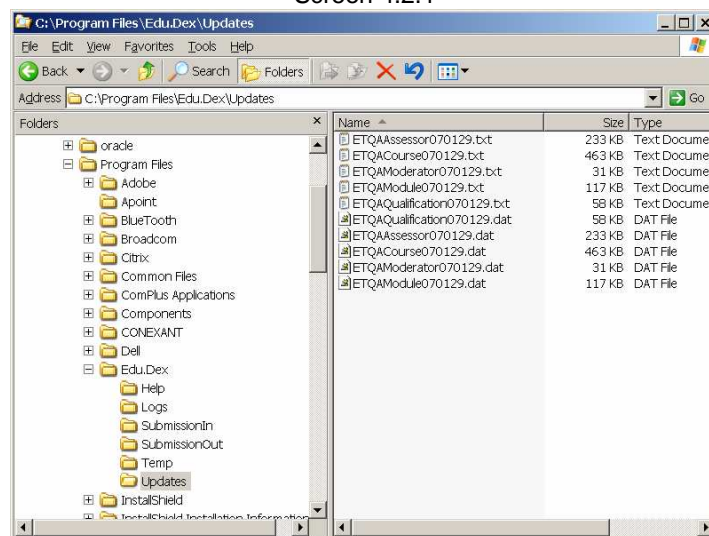
3 Where to find the Edu.Dex SAS SETA lookup codes

The Edu.Dex SAS SETA lookup codes are available on the SAS SETA web site at <http://datanet.sasseta.org.za/veridatanet/VeriDataNet.asp>. Please scroll to the bottom of the screen to the "Training Provider Data Request" section and select the "Click here for more..." link next to the Training Provider Data Request item.

4 How to update the Edu.Dex SAS SETA lookup codes

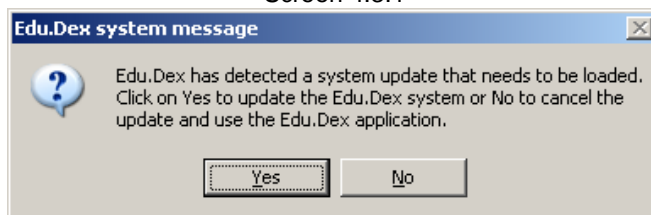
1. Go to the SAS SETA VeriDataNet Information website at <http://datanet.sasseta.org.za/veridatanet/VeriDataNet.asp> and request your data codes. The system will e-mail the required lookup codes to you.
2. Copy the update files that are attached to your e-mail into the [Installation directory]\Edu.Dex\Updates\ path. (See Screen 4.2.1).

Screen 4.2.1



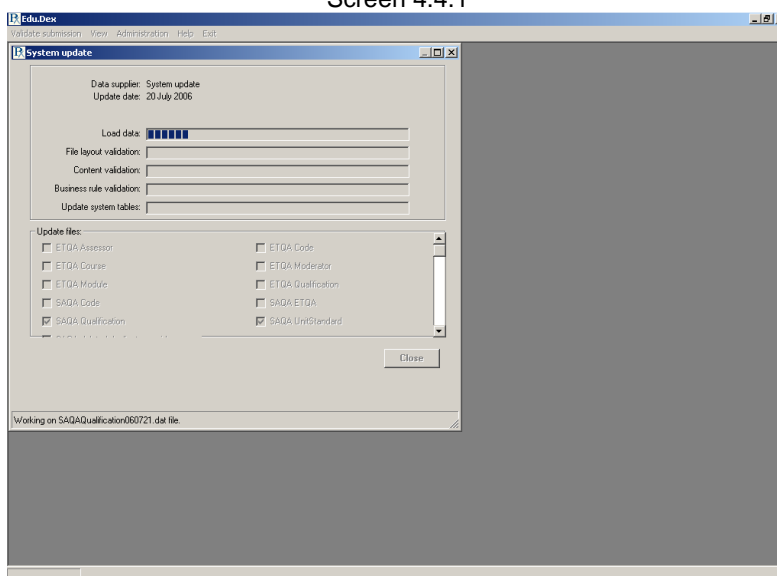
3. Start the Edu.Dex data validation utility (if Edu.Dex was open when you started then just close the application and start the application again). Login with your login and password. Edu.Dex will notify you that an update has been found (see Screen 4.3.1).

Screen 4.3.1



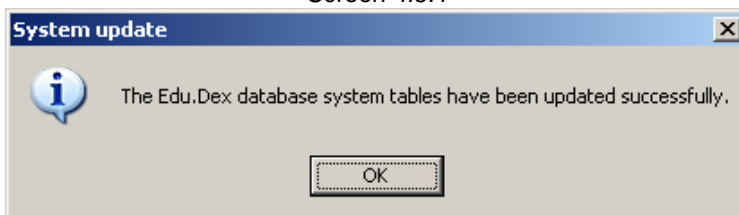
4. Click the **Yes** button to install the update. The system update screen will be displayed and the progress of the validation of the system update will start (see Screen 4.4.1).

Screen 4.4.1



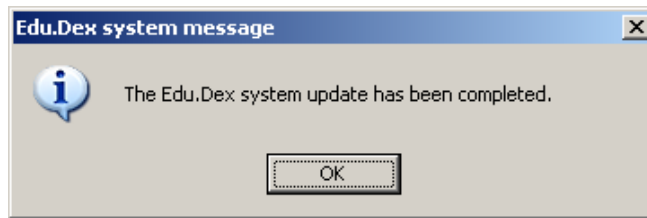
5. Edu.Dex will display a message to confirm that the system tables in Edu.Dex have been updated successfully (see Screen 4.5.1). Click on **OK** to continue.

Screen 4.5.1



Edu.Dex will display a further message to confirm that the complete update has been successfully implemented (see Screen 4.5.2). Click on **OK** to continue.

Screen 4.5.2



6. The Edu.Dex update is now complete and the system is now ready for further use.

Please contact the Edu.Dex technical helpdesk at Edu.Dex@Praxis.co.za urgently if you experience any problems implementing a Edu.Dex update.